

HOBE SOUND COMMERCE PARK

A PARCEL OF LAND IN THE GOMEZ GRANT MARTIN COUNTY, FLORIDA

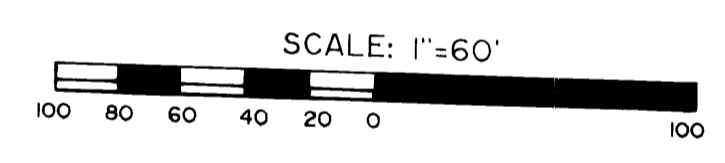
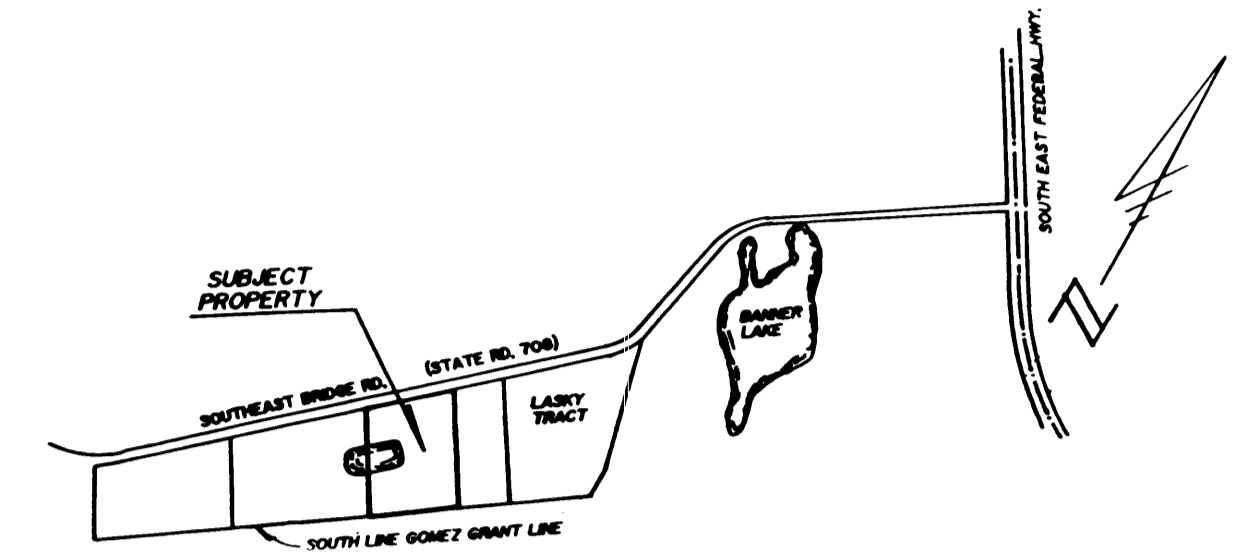
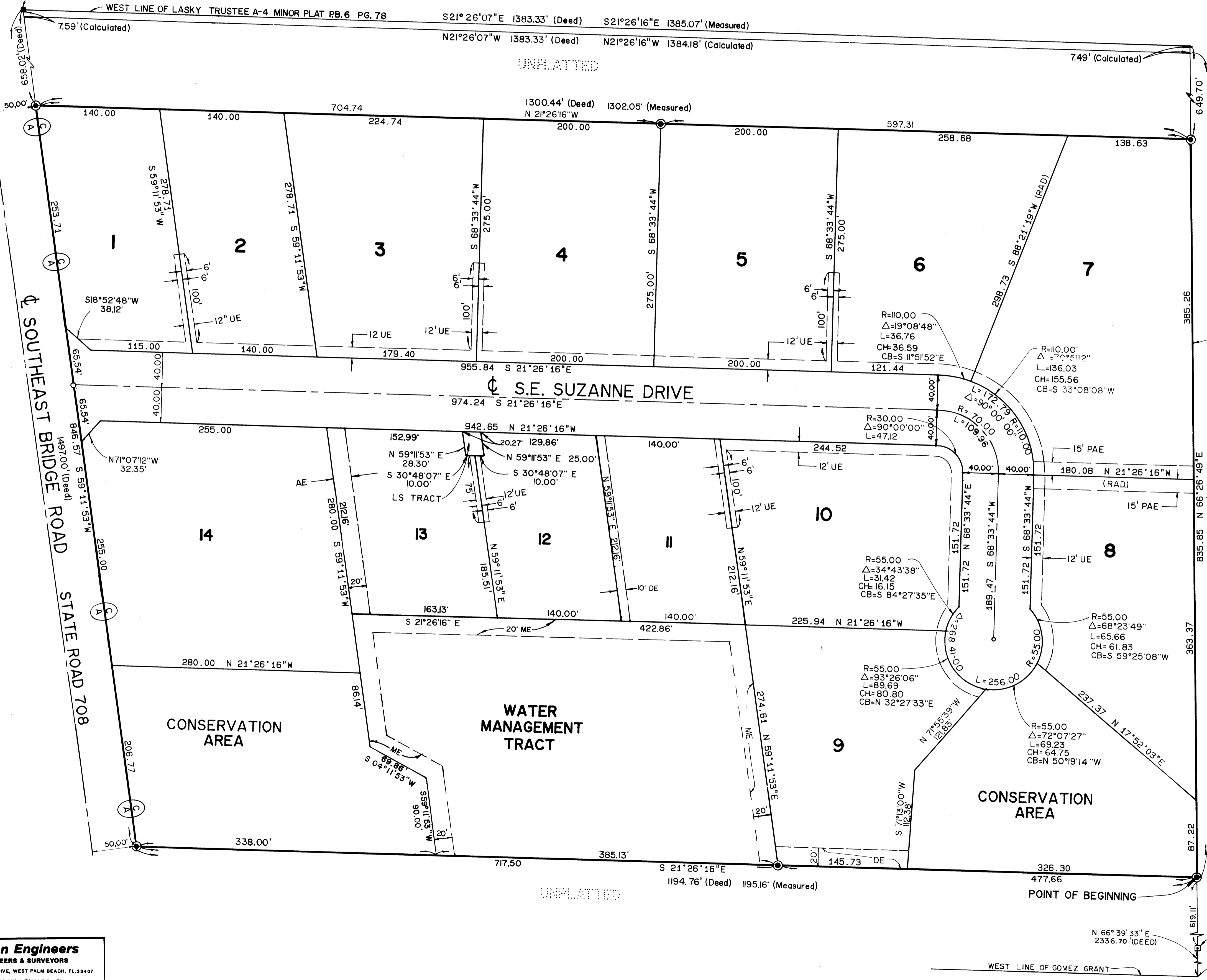
SEPTEMBER 1988
SHEET 2 of 2

I, Marsha Stiller, Clerk of the Circuit Court of Martin County, Florida, hereby certify that this plat was filed for record in Plat Book 11, Page 74, Martin County, Florida, public records, this ___ day of _____, 1988.

File No. _____
BY: _____
Deputy Clerk

(Circuit Court Seal)

P.O.B. NW CORNER OF
LASKY TRUSTEE A-4 MINOR PLAT
FD. P.R.M.



NOTE:
The bearings shown hereon are based on the southerly right-of-way line of S.R. 708 as S. 59°11'53" W, as shown on Lasky Trustee A-4 Minor Plat.

- LEGEND**
- RAD = RADIAL
 - R = RADIUS
 - Δ = DELTA
 - L = ARC
 - CH = CHORD
 - CB = CHORD BEARING
 - (with center dot) = DENOTES PERMANENT CONTROL POINT (PCP)
 - (with center dot) = DENOTES PERMANENT REFERENCE MONUMENT (PRM)
 - DE = DENOTES DRAINAGE EASEMENT
 - ME = DENOTES MAINTENANCE EASEMENT
 - LS = DENOTES LIFT STATION TRACT
 - PAE = DENOTES PUBLIC ACCESS EASEMENT
 - AE = DENOTES ACCESS EASEMENT
 - UE = DENOTES UTILITY EASEMENT
 - ⓐ = DENOTES CONTROLLED ACCESS LINE

Hutcheon Engineers
CIVIL ENGINEERS & SURVEYORS
4431 EMBARCADERO DRIVE, WEST PALM BEACH, FL 33407
1505 S. W. MARTIN HIGHWAY, PALM CITY, FL 32909

5155.00 (07)